

tisca textiles

living  
commercial  
mobility  
sports



TISCA

# Tisca Dark Pearl

Special Edition





## Tisca Dark Pearl

Dark, surging blackness interspersed with moonlight reflected in the spray of the waves. Primitive power with such beauty that it leaves us trembling and yet captures our hearts.



Tisca Dark Pearl is an innovative carpet shrouded in mystery and boasts an enchanting structure and surface as well as an exhilarating interplay of colors.

Inspired by the darkness of the sea at night and brought to life by the colors of the spray and foam which capture the moonlight. Alternating between geometric and playful, but always with a clear statement and just a hint of secrecy.




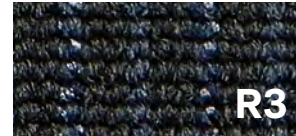

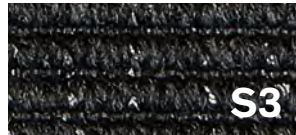
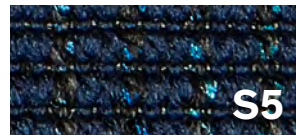
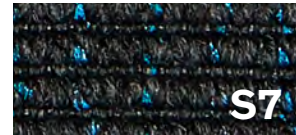

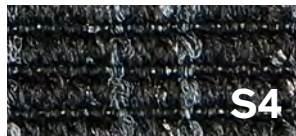
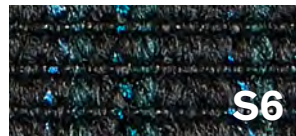

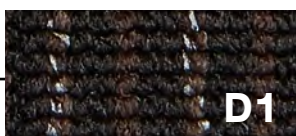
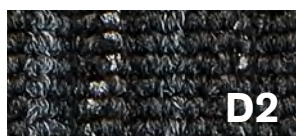


Durable high-tech yarns interspersed with the gentle shimmer of colored pearls form a structure with a technical look and feel and provide the carpet with its unique flair, thrilling and mysterious, as deep and wide as the ocean itself.



# Collection Structure

There are 16 colors to choose from. The Tisca design team has employed color matching to carefully coordinate the colors of the base and space yarns and thus offer the observer a unique image.

The collection is clearly structured with three surfaces – rep, structure, and design – and available in four colors: brown, gray, blue green, and gray blue.

		Colors			
		Brown	Gray	Blue Green	Gray Blue
<b>Surfaces</b>	Rep	 R1	 R2	 R4	 R3
	Structure	 S1	 S3	 S5	 S7
	Structure	 S2	 S4	 S6	 S8
	Design	 D1	 D2	 D3	 D4
		arabica coffee espresso mocca  The Black Radiance of Coffee	steel pebble graphite carbon  The Metallic Shimmer of Stones	atlantic neptun fjord poseidon  The Glorious Expanses of Outer Space	orion night apollo pacific  The Glorious Sparkle of the Ocean Depths

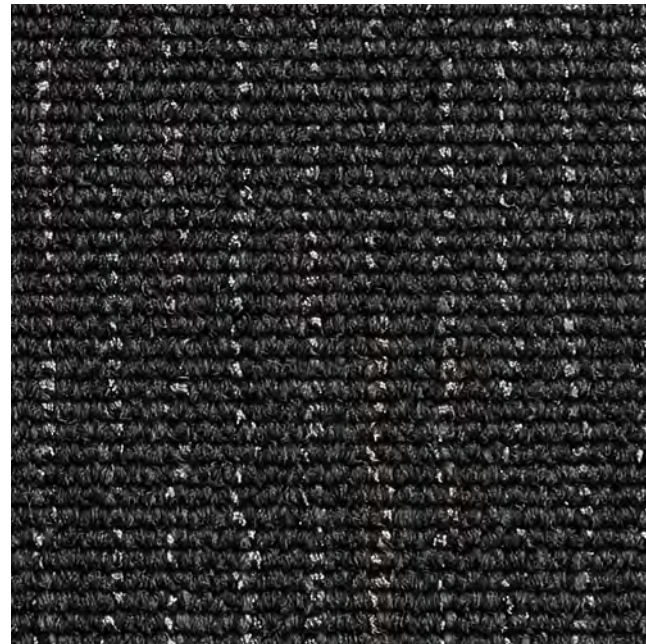


# Tisca Dark Pearl Rep

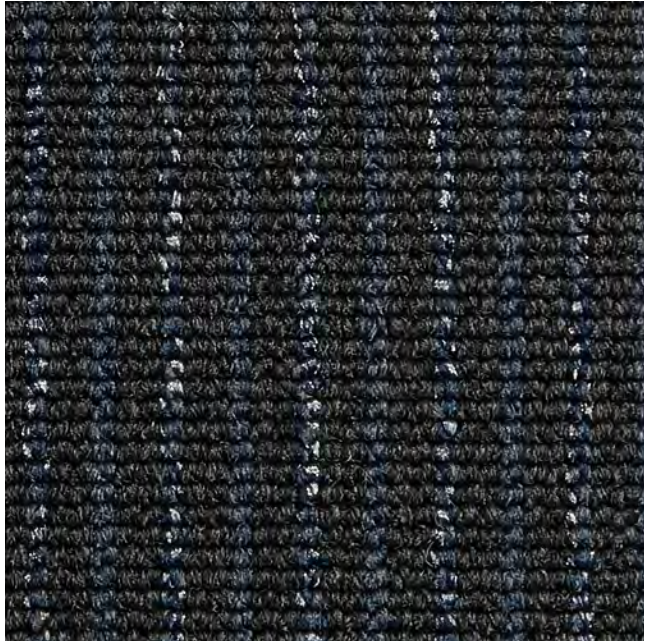
Darkness and moonlight reflected  
in the water. Always the same  
and yet always new and full of life,  
forever extending into eternity.



R1 arabica



R2 steel



R3 orion



R4 atlantic



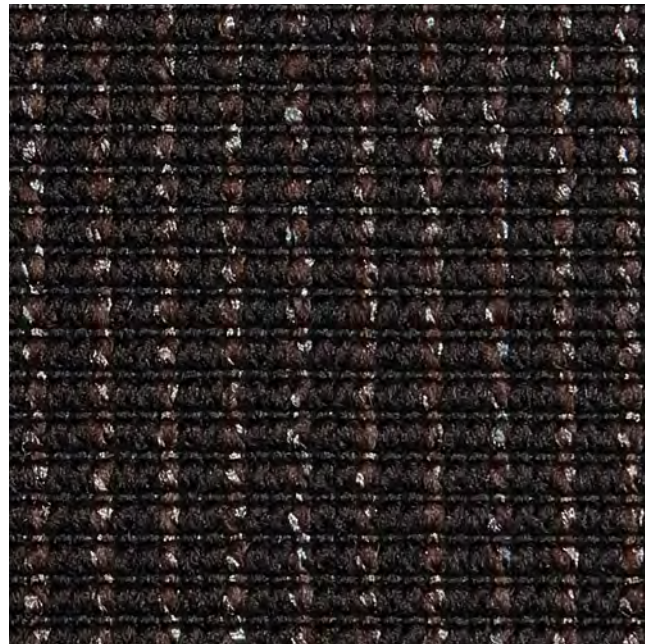






# Tisca Dark Pearl Structure

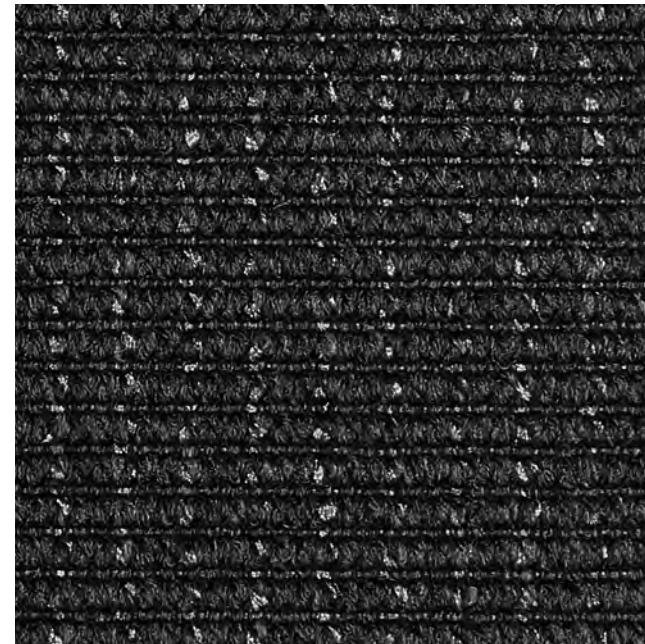
A clear structure with peaks  
and valleys, its intensity  
interspersed and softened  
with iridescent colors.



S1 coffee



S2 espresso



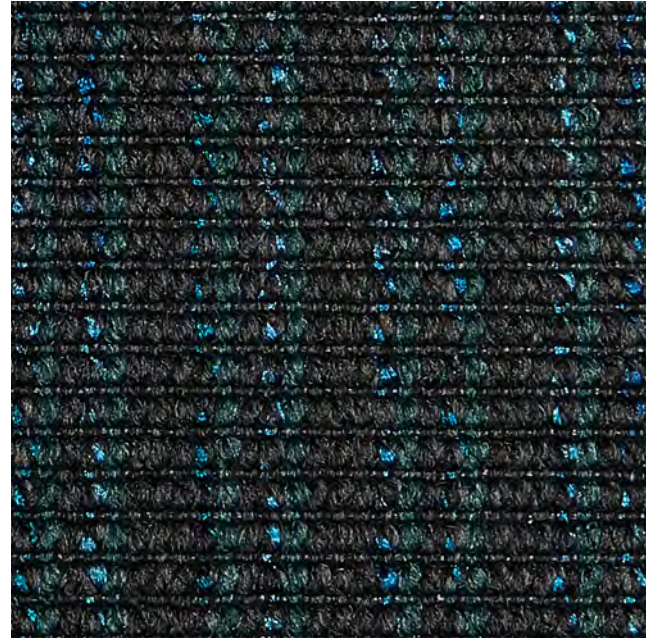
S3 pebble



S4 graphite



S5 neptun



S6 fjord



S7 night



S8 apollo

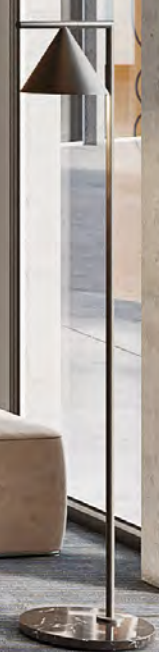




401

402

403





# Tisca Dark Pearl Design

The surface combines height and depth with perpendicular stripes to provide the carpet with its very own sense of excitement and thus create a harmonious whole.



D1 mocca



D2 carbon



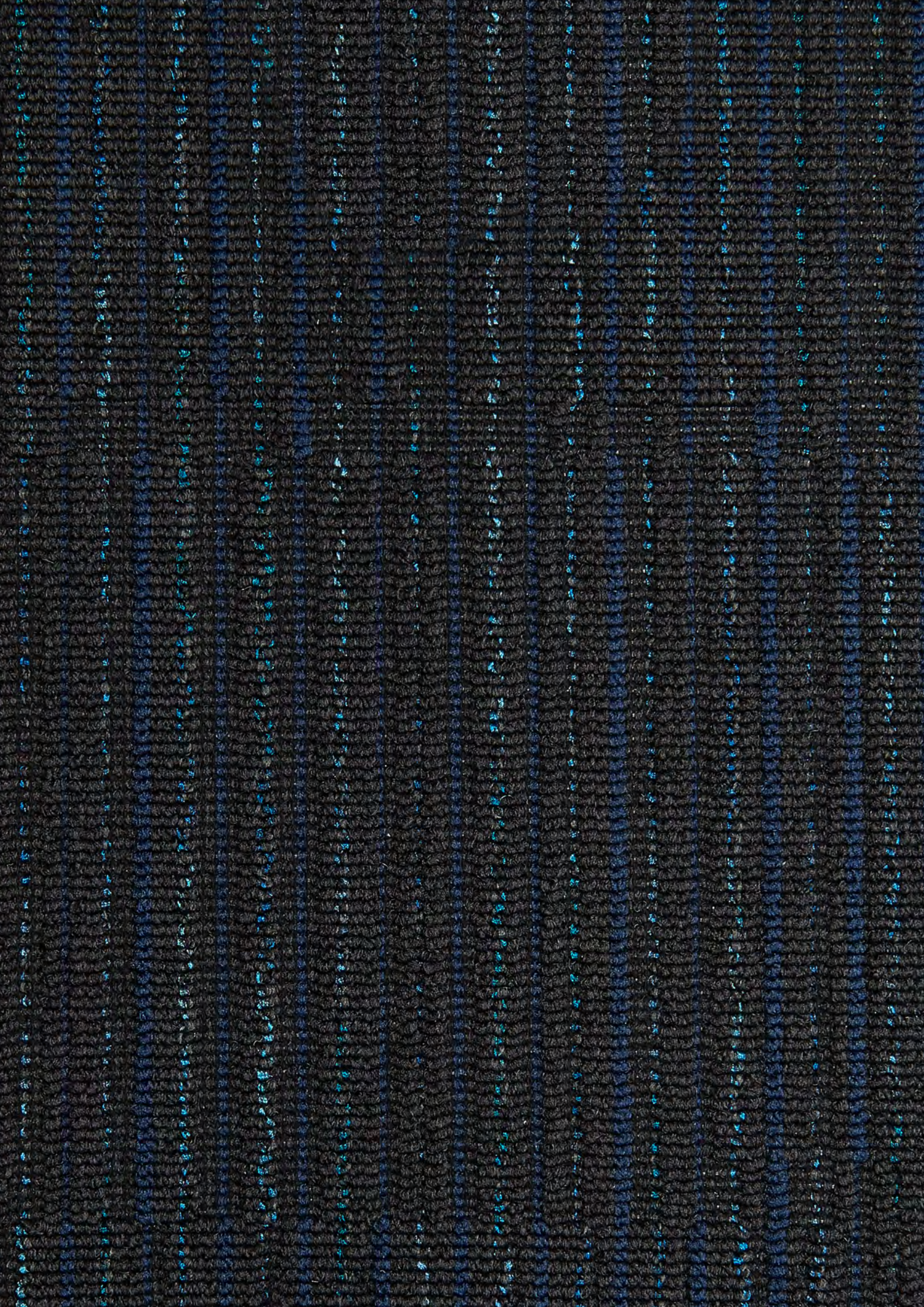
D3 poseidon



D4 pacific







### Combination Options

The colors of Tisca Dark Pearl are carefully coordinated, allowing them to be mixed and matched, and complement the products of the Tisca Eco- Edition.

### Raw Materials

Combination of the high-tech yarn of the Tisca Eco range and Econyl space yarns. The base yarns are Solution Dyed, while the space yarns are printed to add a dash of color.

### Special Characteristics

- Superior wear properties: especially durable and extremely robust
- High cut resistance
- Absolutely colorfast
- Dirt-resistant thanks to its special fiber cross section
- Resistant to UV rays and yellowing
- Quick recovery from pressure marks

### Quantity Flexibility

Available starting at 240 m<sup>2</sup>

---

### Facts

Number of colors	16 (no special colors)
Colors	Brown/Gray/Gray Blue/Blue Green
Pile material	100% polyamide continuous filament, Econyl and Highperformance PA 6, permanent antistatic
Dyeing	Pigment-dyed (base), space-dyed (accents)
Construction	Wilton weave, loop pile
Composition	100% polyamide
Width	200 cm
Weight	Dependent on design

---

### Internal Tests

Additional appl.	Suitable for chairs with casters
Use	Heavy (33)
Selvage	Yes



## Technische Daten

Einsatzbereich	Arbeiten		
Zusatzeignungen	Stuhlrollen ständige Nutzung, Treppen ständige Nutzung, Fussbodenheizung, antistatisch, schnittkantenfest		
Beanspruchung	EN 1307: Geschäftsbereich stark (33)		
Komfort	EN 1307: LC2 (R) / LC1 (D/S)		
Herstellungsart	gewebt		
Oberflächenstruktur	Schlingenflor, mehrfarbig		
Polmaterial	100% Polyamid endlos, Econyl und Highperformance PA 6, permanent antistatisch		
Färbung	pigmentgefärbt, space dyed		
Trägermaterial	synthetisch		
Rückenausrüstung	Latex		
	<b>Dark Pearl R</b>	<b>Dark Pearl D</b>	<b>Dark Pearl S</b>
Polschichtgewicht	ca. 438 g/m <sup>2</sup>	ca. 274 g/m <sup>2</sup>	ca. 283 g/m <sup>2</sup>
Poleinsatzgewicht	ca. 690 g/m <sup>2</sup>	ca. 550 g/m <sup>2</sup>	ca. 560 g/m <sup>2</sup>
Gesamtgewicht	ca. 1640 g/m <sup>2</sup>	ca. 1560 g/m <sup>2</sup>	ca. 1460 g/m <sup>2</sup>
Polnoppenzahl	ca. 122 400 /m <sup>2</sup>	ca. 122 400 /m <sup>2</sup>	ca. 122 400 /m <sup>2</sup>
Poldicke	ca. 2,5 mm	ca. 2,1 mm	ca. 2,1 mm
Gesamtdicke	ca. 4,7 mm	ca. 4,5 mm	ca. 4,1 mm
Schadstoffprüfung	PRODIS GuT Nr. C5DE6BDC	PRODIS GuT Nr. 2DCB8DDD	PRODIS GuT Nr. 6EDDCC85
Brandverhalten	VKFRF2 / EN 13501-1 Cfl-s1 (verklebt)	VKFRF2 / EN 13501-1 Cfl-s1 (verklebt)	VKFRF2 / EN 13501-1 Cfl-s1 (verklebt)
Trittschalldämmung	ca. 22 dB ΔL <sub>w</sub>	ca. 20 dB ΔL <sub>w</sub>	ca. 19 dB ΔL <sub>w</sub>
Schallabsorptionsgrad	α <sub>w</sub> 0,15 (H)	α <sub>w</sub> 0,10 (H)	α <sub>w</sub> 0,15 (H)
	f in Hz 125 250 500 1000 2000 4000	f in Hz 125 250 500 1000 2000 4000	f in Hz 125 250 500 1000 2000 4000
	α <sub>s</sub> 0,02 0,02 0,05 0,15 0,34 0,34	α <sub>s</sub> 0,02 0,02 0,04 0,11 0,31 0,28	α <sub>s</sub> 0,02 0,02 0,04 0,15 0,27 0,27
Wärmedurchlasswiderstand	ca. 0,05 m <sup>2</sup> · K/W	ca. 0,05 m <sup>2</sup> · K/W	ca. 0,09 m <sup>2</sup> · K/W
Elektrostatisches Verhalten	ca. -0,4 kV (ISO 6356)	ca. -0,3 kV (ISO 6356)	ca. -0,3 kV (ISO 6356)
Elektrischer Widerstand	≤ 10 <sup>9</sup> Ohm (ISO 10965)	≤ 10 <sup>9</sup> Ohm (ISO 10965)	≤ 10 <sup>9</sup> Ohm (ISO 10965)
	bei ableitfähiger Beschichtung und Verlegung	bei ableitfähiger Beschichtung und Verlegung	bei ableitfähiger Beschichtung und Verlegung
Breite	ca. 200 cm		
Rollenlänge	ca. 30 lfm		
Mindestmenge	200 m <sup>2</sup> / Kleinmengen ab 60 m <sup>2</sup> mit Zuschlag		
Lieferform	Rollen		
Verlegung	siehe Tisca Verlegeanleitung		

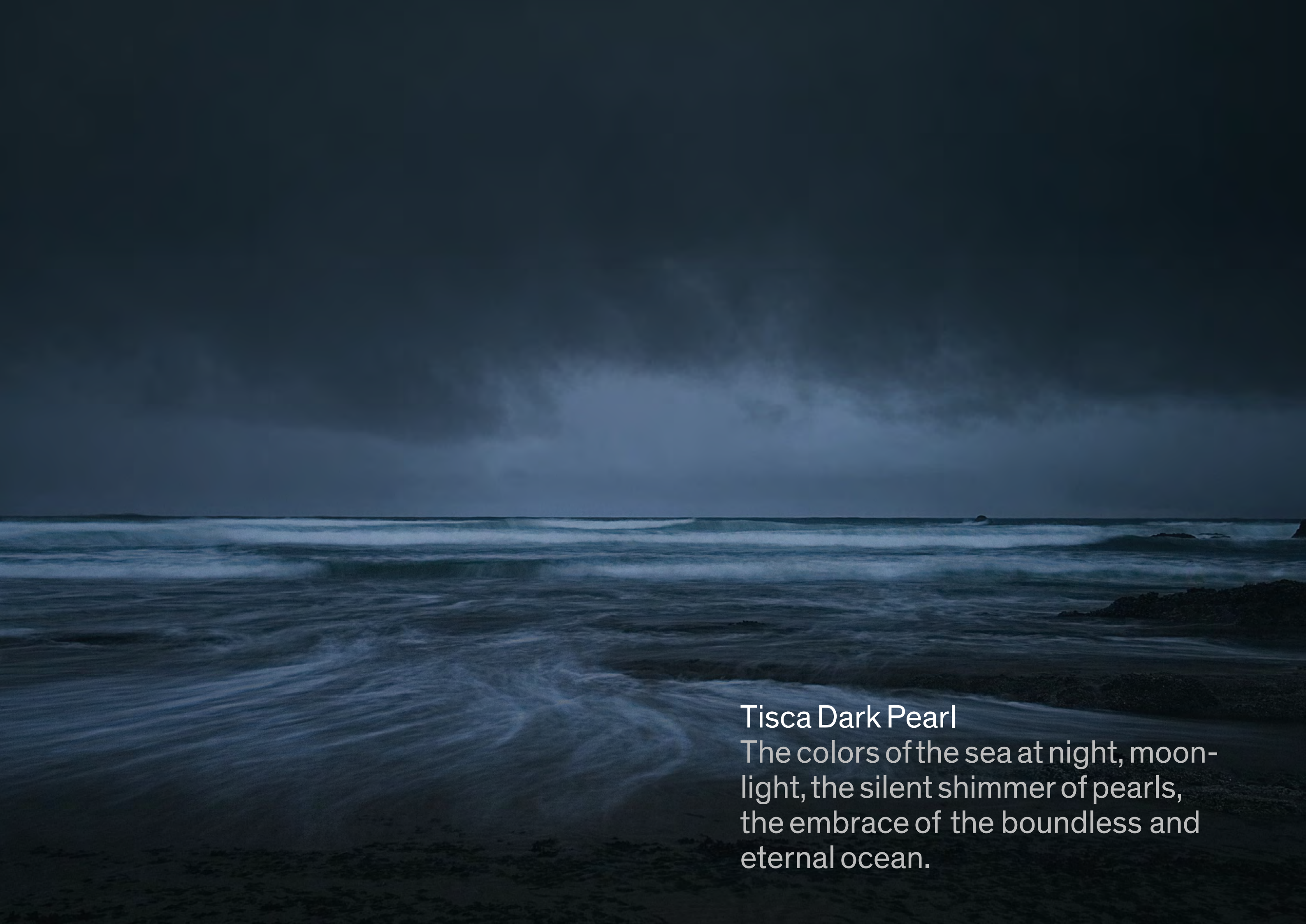
## Technical data

application	contract areas		
additional applications	chairs with castors continuous use, stairs continuous use, floor-heating, antistatic, non-fray		
use	EN 1307: commercial heavy (33)		
comfort	EN 1307: LC2 (R) / LC1 (D/S)		
construction	woven		
texture	loop pile, multicoloured		
pile material	100% polyamide continuous filament, Econyl and Highperformance PA 6, permanent antistatic		
method of dyeing	solution dyed, space dyed		
primary backing	synthetic		
secondary backing	latex		
	<b>Dark Pearl R</b>	<b>Dark Pearl D</b>	<b>Dark Pearl S</b>
surface pile weight	approx. 438 g/m <sup>2</sup> (13 oz/sq yd)	approx. 274 g/m <sup>2</sup> (8 oz/sq yd)	approx. 283 g/m <sup>2</sup> (8 oz/sq yd)
total pile weight	approx. 690 g/m <sup>2</sup> (20 oz/sq yd)	approx. 550 g/m <sup>2</sup> (16 oz/sq yd)	approx. 560 g/m <sup>2</sup> (17 oz/sq yd)
total weight	approx. 1640 g/m <sup>2</sup> (48 oz/sq yd)	approx. 1560 g/m <sup>2</sup> (46 oz/sq yd)	approx. 1460 g/m <sup>2</sup> (43 oz/sq yd)
number of tufts	approx. 122 400 /m <sup>2</sup> (102 326 /sq yd)	approx. 122 400 /m <sup>2</sup> (102 326 /sq yd)	approx. 122 400 /m <sup>2</sup> (102 326 /sq yd)
pile thickness	approx. 2,5 mm (3/32")	approx. 2,1 mm (7/32")	approx. 2,1 mm (7/32")
total thickness	approx. 4,7 mm (3/16")	approx. 4,5 mm (29/64")	approx. 4,1 mm (5/32")
contaminant test	PRODIS GuT no. C5DE6BDC	PRODIS GuT no. 2DCB8DDD	PRODIS GuT no. 6EDDCC85
flammability	VKFRF2 / EN 13501-1 Cfl-s1 (glued)	VKFRF2 / EN 13501-1 Cfl-s1 (glued)	VKFRF2 / EN 13501-1 Cfl-s1 (glued)
impact sound insulation	approx. 22 dB ΔL <sub>w</sub>	approx. 20 dB ΔL <sub>w</sub>	approx. 19 dB ΔL <sub>w</sub>
sound absorption	α <sub>w</sub> 0,15 (H)	α <sub>w</sub> 0,10 (H)	α <sub>w</sub> 0,15 (H)
	f in Hz 125 250 500 1000 2000 4000	f in Hz 125 250 500 1000 2000 4000	f in Hz 125 250 500 1000 2000 4000
	α <sub>s</sub> 0,02 0,02 0,05 0,15 0,34 0,34	α <sub>s</sub> 0,02 0,02 0,04 0,11 0,31 0,28	α <sub>s</sub> 0,02 0,02 0,04 0,15 0,27 0,27
thermal insulation	approx. 0,05 m <sup>2</sup> · K/W	approx. 0,05 m <sup>2</sup> · K/W	approx. 0,09 m <sup>2</sup> · K/W
static electricity	approx. -0,4 kV (ISO 6356)	approx. -0,3 kV (ISO 6356)	approx. -0,3 kV (ISO 6356)
earth discharge resistance	≤ 10 <sup>9</sup> Ohm (ISO 10965)	≤ 10 <sup>9</sup> Ohm (ISO 10965)	≤ 10 <sup>9</sup> Ohm (ISO 10965)
	with conductive backing and installation	with conductive backing and installation	with conductive backing and installation
width	approx. 200 cm (6'7")		
length of roll	approx. 30 m (98')		
minimum quantity	200 m <sup>2</sup> (240 sq yd) / small quantities from 60 m <sup>2</sup> (72 sq yd) with surcharge		
availability	rolls		
installation method	see Tisca installation instructions		

Erstellt: 25.09.2023 | Änderungen im Sinne des technischen Fortschritts vorbehalten.  
ISO 9001 zertifiziert | EN AS 9100 zertifiziert







## Tisca Dark Pearl

The colors of the sea at night, moonlight, the silent shimmer of pearls, the embrace of the boundless and eternal ocean.





TISCA