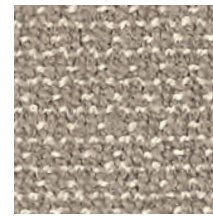


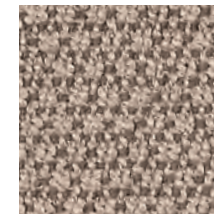
Mira X Kalahari 8702



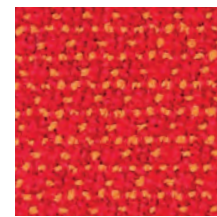
écru
82



kiesel
32



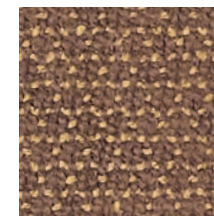
lehm
43



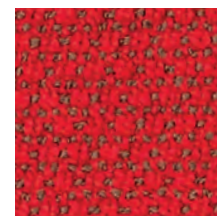
orange
20



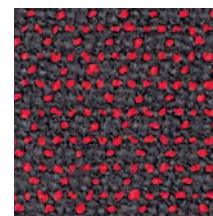
rost
42



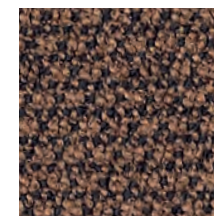
braun
40



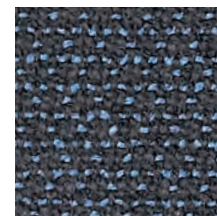
rot
21



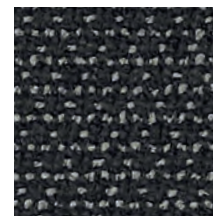
dunkelrot
25



schokolade
41



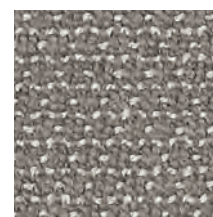
nacht
70



schwarz
90



dunkelbraun
44



grau
60



basalt
91

Ein modernes Aussehen durch die feine, Ton in Ton gehaltene, Querripsbindung. Wird oft auch als schwerer Vorhangstoff eingesetzt und ist äusserst pflegeleicht, indem Flecken einfach abgewischt werden können.

A modern look thanks to a fine tone-in-tone colored cross-rib weave. Frequently applied also as a heavy curtain fabric. Extremely easy to care and stain resistant.

Produkt Nr. / Product No.	100437
Breite / Width	140cm
Anzahl Colorits / No. of Colors	14
Scheuertouren / Abrasion Resistance	35'000
Schallabsorption / sound absorption	aw 0.90
Material / Material	100% PES Trevira CS
Gewicht ca. / Weight approx.	530g/m ² 530g/sq.m
Einsprung ca. / Shrinkage approx.	2%

